

**UK**

149 Tottenham Court Road  
London W1T 7JA  
T (+44) 0845 226 7202  
F (+44) 0845 430 9260

Lower Bristol Road  
Bath BA2 3ER  
T (+44) 0845 226 7201  
F (+44) 0845 226 9250  
E [info\\_uk@hermanmiller.com](mailto:info_uk@hermanmiller.com)  
W [www.hermanmiller.com/europe](http://www.hermanmiller.com/europe)

**CANADA**

Suite 200  
462 Wellington Street West  
Toronto, ON M5V 1E3  
T (+1) 416 366 3300  
F (+1) 416 366 2100  
E [toronto\\_info@hermanmiller.com](mailto:toronto_info@hermanmiller.com)  
W [www.hermanmiller.com/canada](http://www.hermanmiller.com/canada)

**FRANCE**

31 rue Tronchet  
75008 Paris  
F-92745 Nanterre Cedex  
T (+33) 01 53 05 34 20  
F (+33) 01 53 05 34 29  
E [info\\_france@hermanmiller.com](mailto:info_france@hermanmiller.com)  
W [www.hermanmiller.com/europe](http://www.hermanmiller.com/europe)

**INDIA**

2nd Floor  
Salapuria Landmark Building  
100 Feet Road  
Indira Naga  
Bangalore  
T (+91) 080 51525252  
F (+91) 080 51525253  
E [info\\_india@hermanmiller.com](mailto:info_india@hermanmiller.com)  
W [www.hermanmiller.com/asia](http://www.hermanmiller.com/asia)

**ITALY**

Via Gran Sasso 6  
I-20030 Lentate sul Seveso (Mi)  
T (+39) 0362 5311 1  
F (+39) 0362 5311 333  
E [info\\_italy@hermanmiller.com](mailto:info_italy@hermanmiller.com)  
W [www.hermanmiller.com/europe](http://www.hermanmiller.com/europe)

**JAPAN**

Tokyo Design Centre, 5th Floor  
5-25-19 Higashi-Gotanda  
Shinagawa-ku  
Tokyo  
T (+81) 3 3444 7551  
F (+81) 3 3444 7580  
E [contact\\_japan@hermanmiller.com](mailto:contact_japan@hermanmiller.com)  
W [www.hermanmiller.com/japan](http://www.hermanmiller.com/japan)

**MEXICO**

Av. Santa Fe 495 – piso 6'  
Col. Cruz Manca, Santa Fe  
Cuajimalpa  
Mexico City 05349  
T (+52) 55 50 63 9600  
F (+52) 55 50 63 9610  
E [hmm.mkt@hermanmiller.com](mailto:hmm.mkt@hermanmiller.com)  
W [www.hermanmiller.com.mx](http://www.hermanmiller.com.mx)

**MIDDLE EAST**

PO Box 37190  
Suite 407 Juma Al Majid Building  
Khalid Bin Al Waleed Street  
Dubai  
T (+971) 4 397 5161  
F (+971) 4 397 6992  
E [hmillier@emirates.net.ae](mailto:hmillier@emirates.net.ae)  
W [www.hermanmiller.com/europe](http://www.hermanmiller.com/europe)

**SINGAPORE**

3 Anson Road, #10-01  
Springleaf Tower  
Singapore 079909  
T (+65) 63 27 54 88  
F (+65) 62 23 11 20  
E [asia\\_customer\\_care@hermanmiller.com](mailto:asia_customer_care@hermanmiller.com)  
W [www.hermanmiller.com/asia](http://www.hermanmiller.com/asia)

**USA**

855 East Main Avenue  
PO Box 302  
Zeeland  
Michigan 49464-0302  
T (+1) 616 654 3000  
E [info@hermanmiller.com](mailto:info@hermanmiller.com)  
W [www.hermanmiller.com](http://www.hermanmiller.com)

## Storage systems

## Metal storage

The GSS or Global Storage System is Herman Miller's integrated family of storage products that can suit every part of the office. Offering consistency of design and colour in a single range, they provide a solution for every type of storage; active, intermediate and archival.

The range consists of a vast choice of options, from drawer units, hinged door units, tambour door units, bookcases, magazine racks, lockers and combination units in many configurations. The choice of three widths and thirteen heights means that there's a unit for any location.

GSS units are robust and solid, they stay rigid when moved, their double-skinned, foam-filled doors have the sound-deadened feel of quality. From the outside, the seamless, precision engineered design is finished with a choice of eight powder coated non-fade colours. A versatile, quality range for every office need.



## Wooden storage

Milano storage is a comprehensive and varied system of cabinets and bookcases. Available in multiple heights, widths and with a range of door options, the units have a variety of internal accessories that ensure flexibility for individual needs. The varied finish options allow the storage units to be integrated with other Herman Miller product solutions to create a sympathetic working environment.

These units can be used to support individual or group filing. They can create a storage island or division in open space, a high density storage area, or just be utilised as an attractive storage solution in a private office.



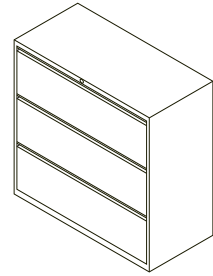
**Metal storage**

- Recessed handles
- Ball-bearing drawer slides with full extension
- Rubber stoppers to doors, flippers and drawers reduce bangs and noise level
- Wide range of internal accessories
- Worktop options in melamine, laminate and veneer to ensure matching to other furniture items
- Choice of eight colours – special colours also possible
- Matching pedestal units available
- Adjustable glides for floor levelling
- Matching steel add-on tops

**Drawer units**

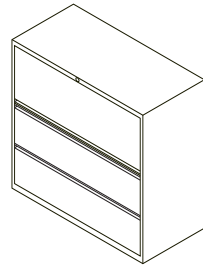
widths 800/900/1000mm

heights 693/845/997/1073/1149/1301mm

**Combination drawer/flipper door units**

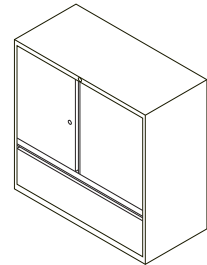
widths 800/900/1000mm

heights 1073/1149/1415/1567/1795/1947/2099mm

**Combination door/drawer units**

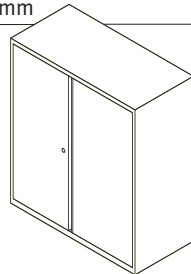
widths 800/1000mm (some units available in 900mm)

heights 1642/1795/1947/2099mm

**Hinged door units**

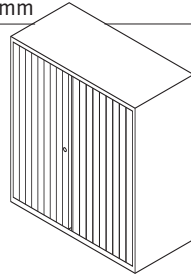
widths 800/1000mm (some units available in 900mm)

heights 693/845/997/1073/1149/1225/1301/1415/1567/1643/1795/1947/2099mm

**Tambour door units**

widths 800/1000/1200mm

heights 693/845/997/1073/1149/1225/1301/1415/1567/1643/1795/1947/2099mm



Also available in three widths (800/900/1000mm) and various heights; bookcases, magazine racks, coat cupboards and lockers.

**Wooden storage**

- Steel shelves with integral lateral filing
- Pull-out file frame option
- Integral worktop
- 180 degree door opening
- Combined lock and handle with removable tumbler
- Adjustable glides for floor levelling

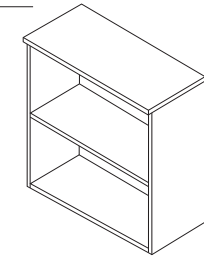
**Bookcases**

widths 800\*/1000mm

heights 720/1100/1300/1400/1700mm

depth 464mm

\*height 720 only

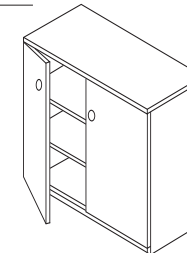
**Wooden door cupboards**

widths 800\*/1000mm

heights 720/1100/1300/1400/1700mm

depth 464mm

\*height 720 only

**Glazed door cupboards**

width 1000mm

heights 1300/1400/1700mm

depth 464mm

